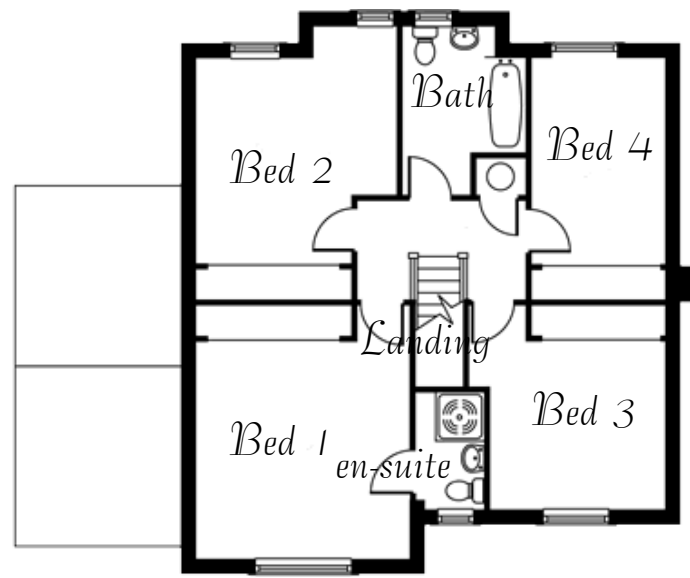


Ground floor



First floor

The Bittern



A four bedroom detached complete with integral double garage, spacious living room and separate dining room. From the entrance hall, with WC and cloakroom, the large living room, which benefits from the additional space provided by a walk-in bay window, leads into the separate rear facing dining room, also accessed from the fitted kitchen. A fully plumbed utility room next to the kitchen has a rear door onto the garden and into the garages.

To the first floor, all four bedrooms enjoy large walk-in wardrobes with the master having en-suite facilities whilst the other rooms share the family bathroom complete with separate shower cubicle.



GROUND FLOOR

Living room	11' 8" x 16' 0"	3575 x 4880
Dining Room	9' 10" x 10' 5"	3000 x 3195
Kitchen	10' 9" x 12' 4"	3278 x 3760
Utility Room	8' 5" x 6' 7"	2575 x 2007
W.C.	3' 3" x 5' 3"	995 x 1605
Twin Garage	18' 2" x 20' 7"	5540 x 6275

FIRST FLOOR

Bedroom	1 12' 7" x 12' 11"	3846 x 3940
En-suite	6' 11" x 4' 3"	2110 x 1310
Bedroom	2 12' 0" x 12' 3"	3656 x 3740
Bedroom	3 10' 6" x 10' 0"	3219 x 3045
Bedroom	4 12' 3" x 8' 1"	3740 x 2460
Bathroom	10'0" x 7' 5"	3065 x 2269