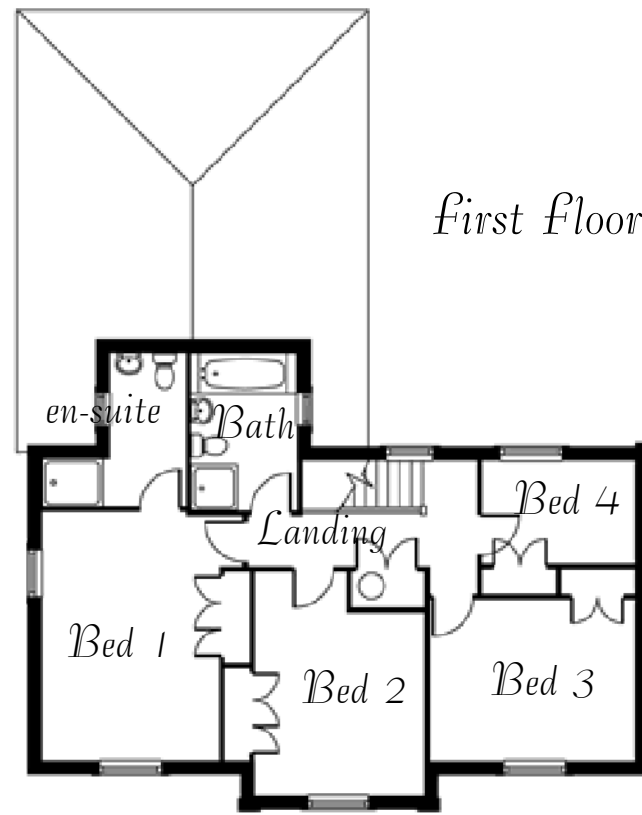
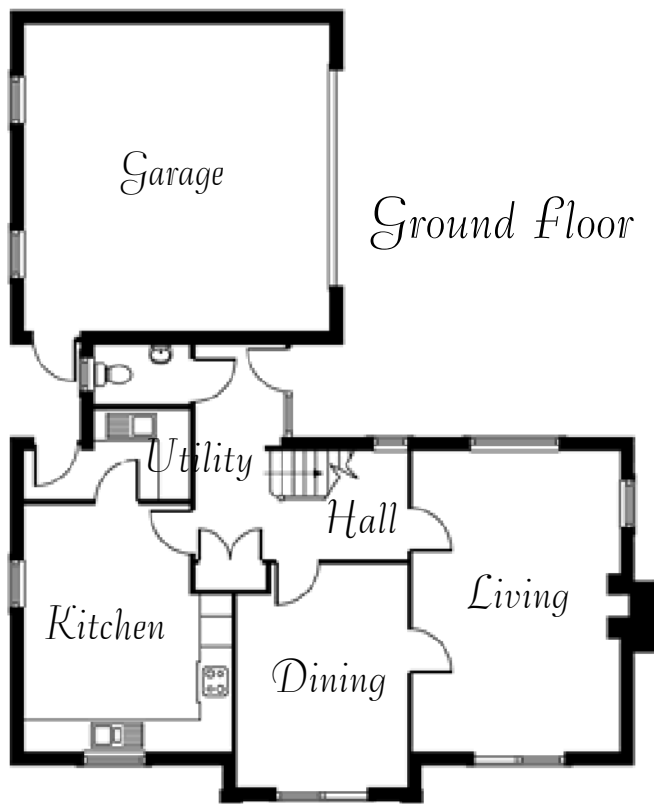


# The Kestral



This four bedroom detached home features a double integral garage in an L shaped design. From the entrance hall, with WC and cloakroom, doors access the main living room and separate dining room together with the spacious breakfasting kitchen from which a plumbed utility room leads into the double garage.

To the first floor, all four bedrooms enjoy large walk-in wardrobes with the master having en-suite facilities whilst the other rooms share the family bathroom, complete with separate shower cubicle.



## *GROUND FLOOR*

Living room	13' 2" x 19' 3"	4012.5 x 5865
Dining room	10' 9" x 14' 2"	3278 x 4315
Kitchen	13' 2" x 15' 9"	4012.5 x 4810
Utility Room	5' 7" x 10' 5"	1720 x 3180
W.C.	3' 8" x 6' 1"	1115 x 1855
Garage	19' 8" x 19' 9"	6015 x 6035

## *FIRST FLOOR*

Bedroom 1	11' 4" x 15' 11"	3460 x 4870
En-suite	4'10" x 9' 9"	1485 x 2975
Bedroom 2	10' 9" x 14' 3"	3283 x 4360
Bedroom 3	13' 3" x 10' 4"	4060 x 3155
Bedroom 4	9' 8" x 6' 7"	2965 x 2010
Bathroom	10' 0" x 6' 9"	3056 x 2057.5